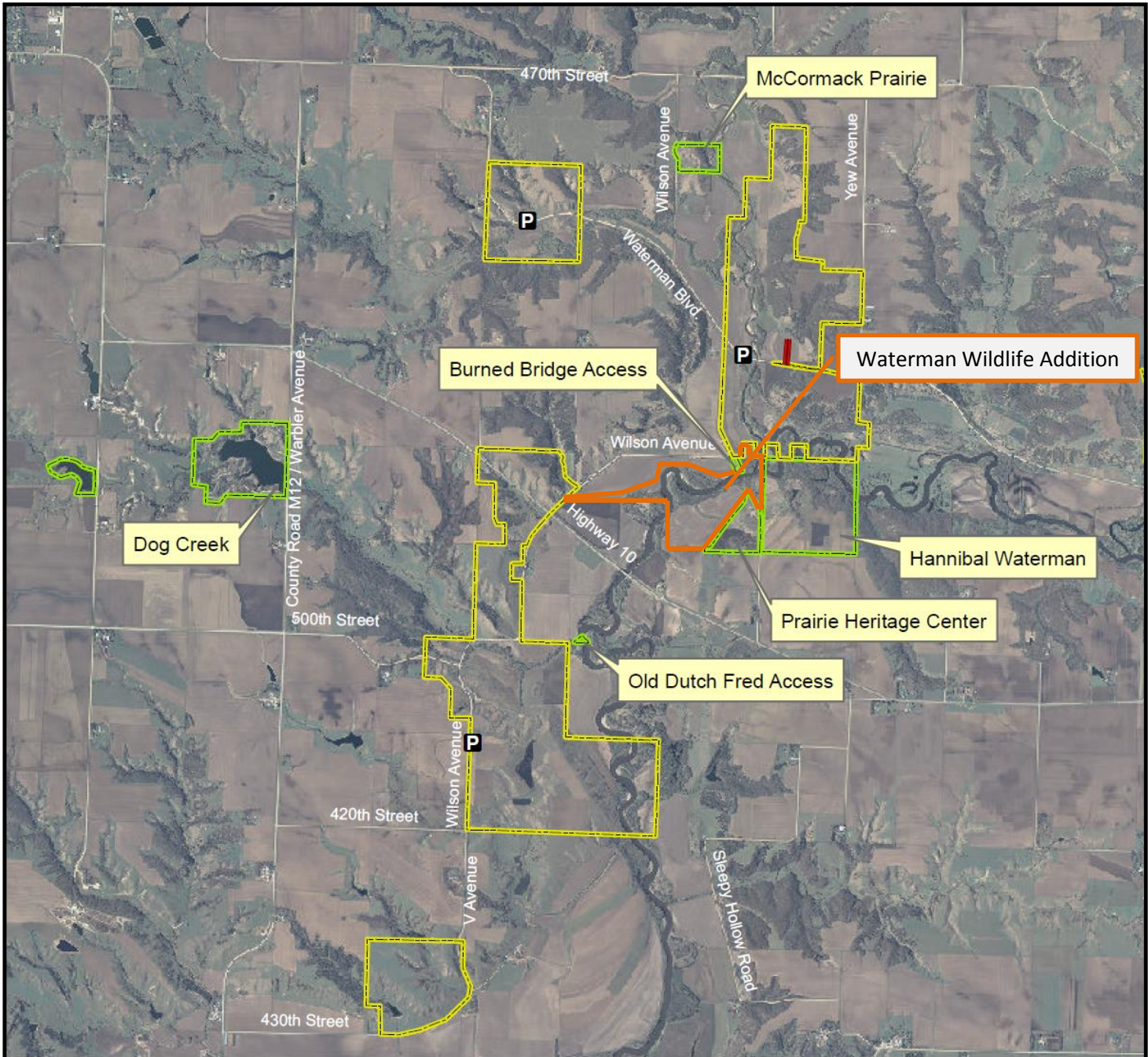


Waterman Prairie Wildlife Management Area



Legend

- State Areas open to hunting
- WMA Boundary
- Parking Lot
- Other Public Land

2007 Aerial Photography

Map Creation Date: 9/2011

Acres: 1,571

Habitat: Prairie, Timber, Stream

Species: Deer, Turkey, Pheasant, Dove

Contact: Chris LaRue
Great Lakes Wildlife Unit
712-330-4543

O'Brien & Cherokee Counties, Iowa
T-94&94N, R-39W,
Sections 4,14-15,23,27,33-34

Directions: 3.5 miles SE of Sutherland on Hwy 10, 2 miles N on Wilson.

Every effort has been made to accurately depict the boundaries on this map. However, users should rely on boundary signs actually located in this area to ensure they do not trespass on private property.